

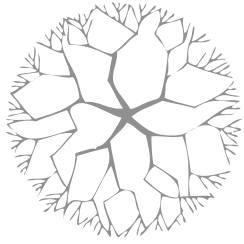


Veterans Memorial Park of Roslyn, SD

Feature Design Elements & Proposed Phase Study



Veterans Memorial Park – Feature Design Elements



Statement / Foundation Trees

- The three Statement Trees represent Air 🌬️, Land 🌞 and Sea 🌊
- Long life span for multi generations to enjoy and watch grow
- Trees also represent the strength of the community and families
- Paths to the trees so visitors can touch and interact with trees



Elm, American

Ulmus americana

Life Span

175-300 years



Oak, Northern Red

Quercus rubra

Life Span

200-400 years



Tall Ornamental Grain-like Grass for Primary Background

- Creates a connection to the farming community and the SD Prairies
- Provides a soft background with movement to the various monuments
- These grasses tend to be more drought resistant and low maintenance



Veterans Memorial Park – Feature Design Elements



New Community Gazebo

- The new community gazebo will provide a central gathering space within the park.
- The floor will be concrete and accessible by the concrete ADA ramp.
- The roof of the gazebo will be an open trellis structure for flowering vines and sun shade. Less maintenance than a fully enclosed roof.
- The eight main support columns will provide opportunities for intuitive displays highlighting interesting facts about Roslyn, SD and the surrounding communities.
- The existing donor bricks will be relocated to a new curved wall which is viewed along the ADA ramp path to the new gazebo.
- The historic fire bell will be relocated to the entrance of the gazebo and provided with a new functioning support structure so that the bell can be rung for special occasions.



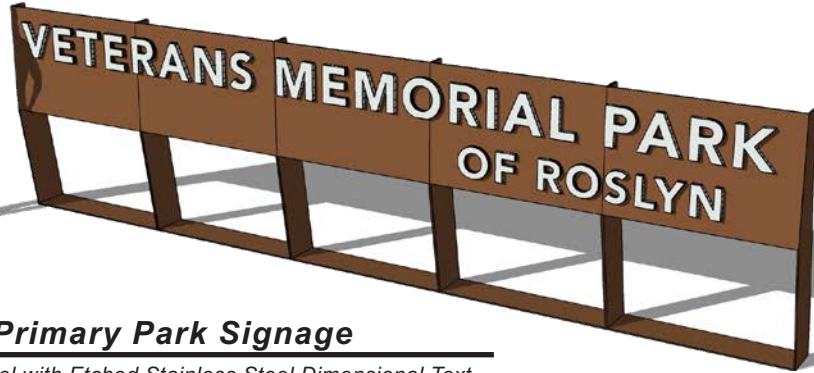
Wheelchair Ramp Specifications & ADA Ramp Slope Guidelines

The Americans with Disabilities Act (ADA) provides Wheelchair Ramp Specifications, Requirements and ADA guidelines that most public areas use are required to meet. Contact local building inspector for additional information on ADA ramp requirements.

- ADA Ramp Slope Requirements of a 1:12 handicap ramp slope ratio, one foot of ramp for each inch of rise. For instance, handicap ramp specifications require a 20 foot ADA ramp for a 20 inch rise.
- ADA Specifications require a Minimum 5' x 5' Flat area at the top and bottom of the ADA ramps.
- ADA Handicap Ramp Requirements of a Minimum 36 inches of clear space across the handicap ramp.
- ADA Ramp Guidelines Require a Minimum Platform size is 5' x 5'
- ADA Requires a Maximum of 30 feet in a single run of wheelchair ramp prior to a rest or turn platform.



Veterans Memorial Park – Feature Design Elements



2

Front Primary Park Signage

Corten Steel with Etched Stainless Steel Dimensional Text

Memorial Monuments

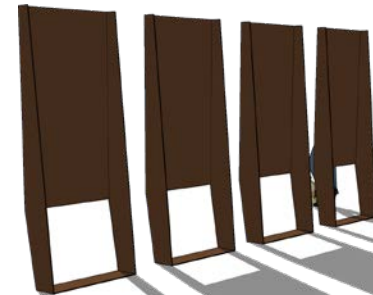
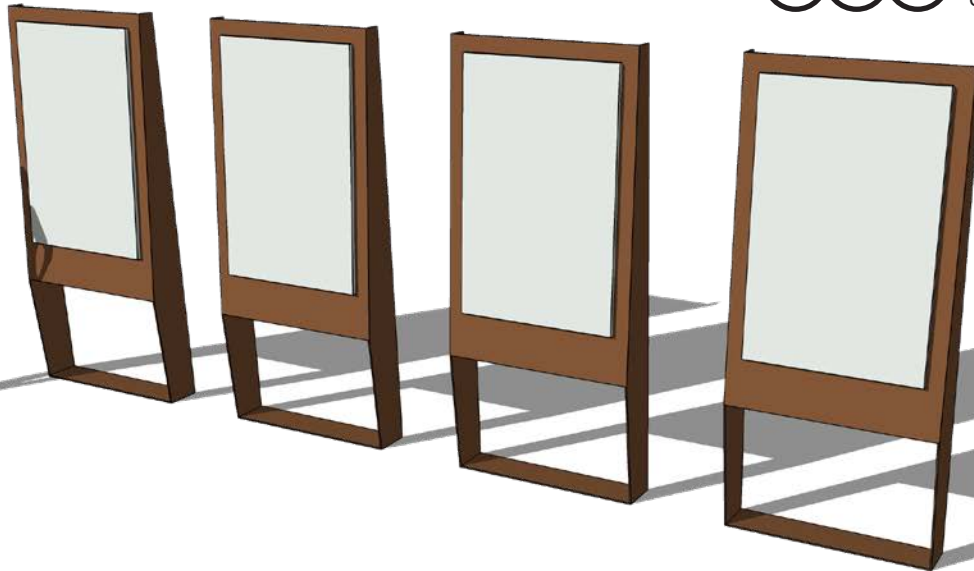
- Corten plate steel structures with removable stainless steel text and etched graphic panels
- The natural finish of the corten steel will rust, providing a protective timeless finish that combined with the various landscape plantings pays homage to those who served and the prairie and farmland communities that supported them.



1 3 6

Park Welcome, Description & Local History Focus

Concrete with Etched Dark Oxidized Stainless Steel Removable Panel



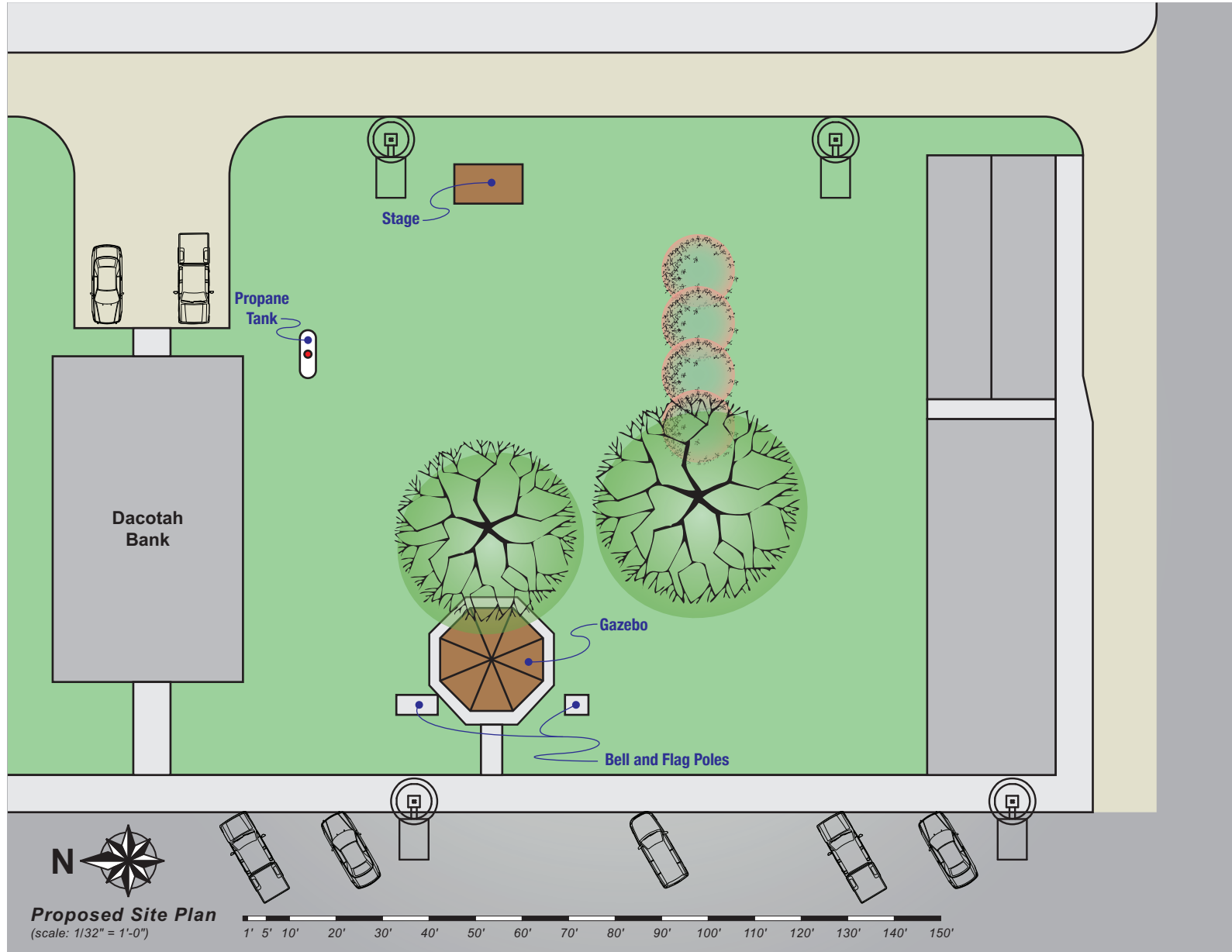
4 5 7

Primary Recognition Displays

Corten Steel with Etched Stainless Steel Removable Panel



Veterans Memorial Park – Existing Condition 08/07/23



08/07/23

- Pricing for design elements related to Veterans Park
 - Concrete/Dirt Work
 - Landscaping
 - Masonry
 - Gazebo
- Fundraising efforts
- Phasing of project and cost reduction options



Concrete/Dirt Work Details – 5'-0" Site Grid

NOTES:

- New sidewalks are all 8'-0" wide
- Gazebo base needs thicker concrete around perimeter
- Concrete First Pour
- Concrete Optional Pour



Propane Tank



Dacotah Bank



Proposed Site Plan
(scale: 1/16" = 1'-0")

HILL
SLOPES
DOWN

Thicker Concrete Perimeter Base
for main support posts and railings

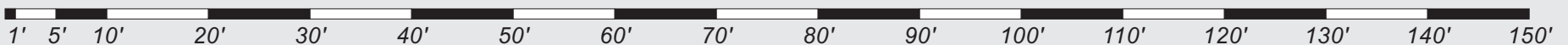
Flag Poles

Existing Sidewalk

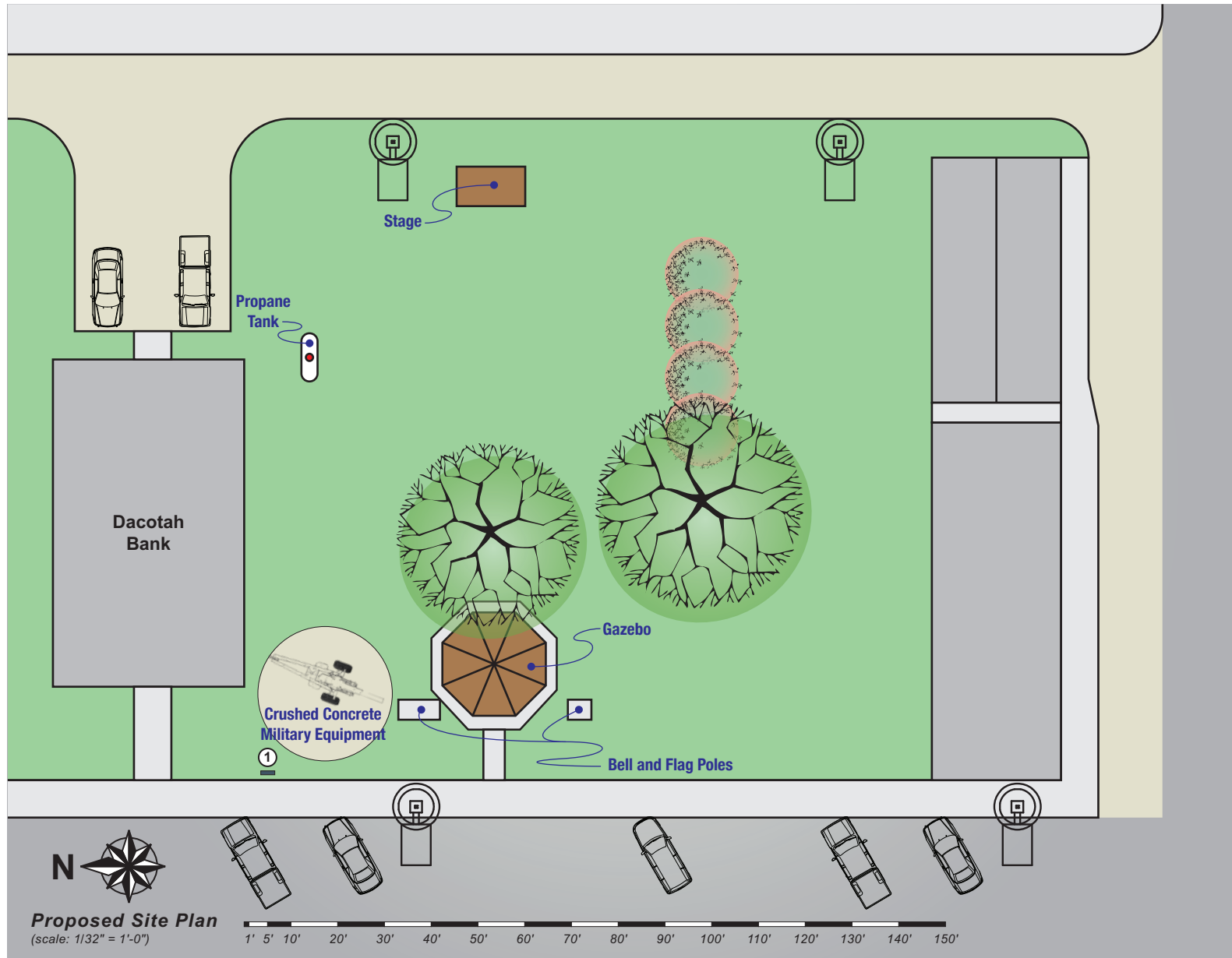
Relocated Existing
Gazebo Bricks onto
new curved wall
(New Curved Wall 4'-0" Tall)

RAMP
UP

RAMP
UP

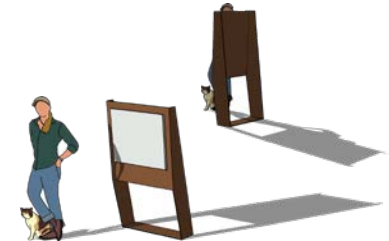


Veterans Memorial Park – Phase 1/Ground Breaking 05/27/24

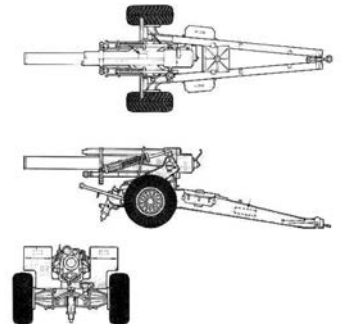


Memorial Day 2024

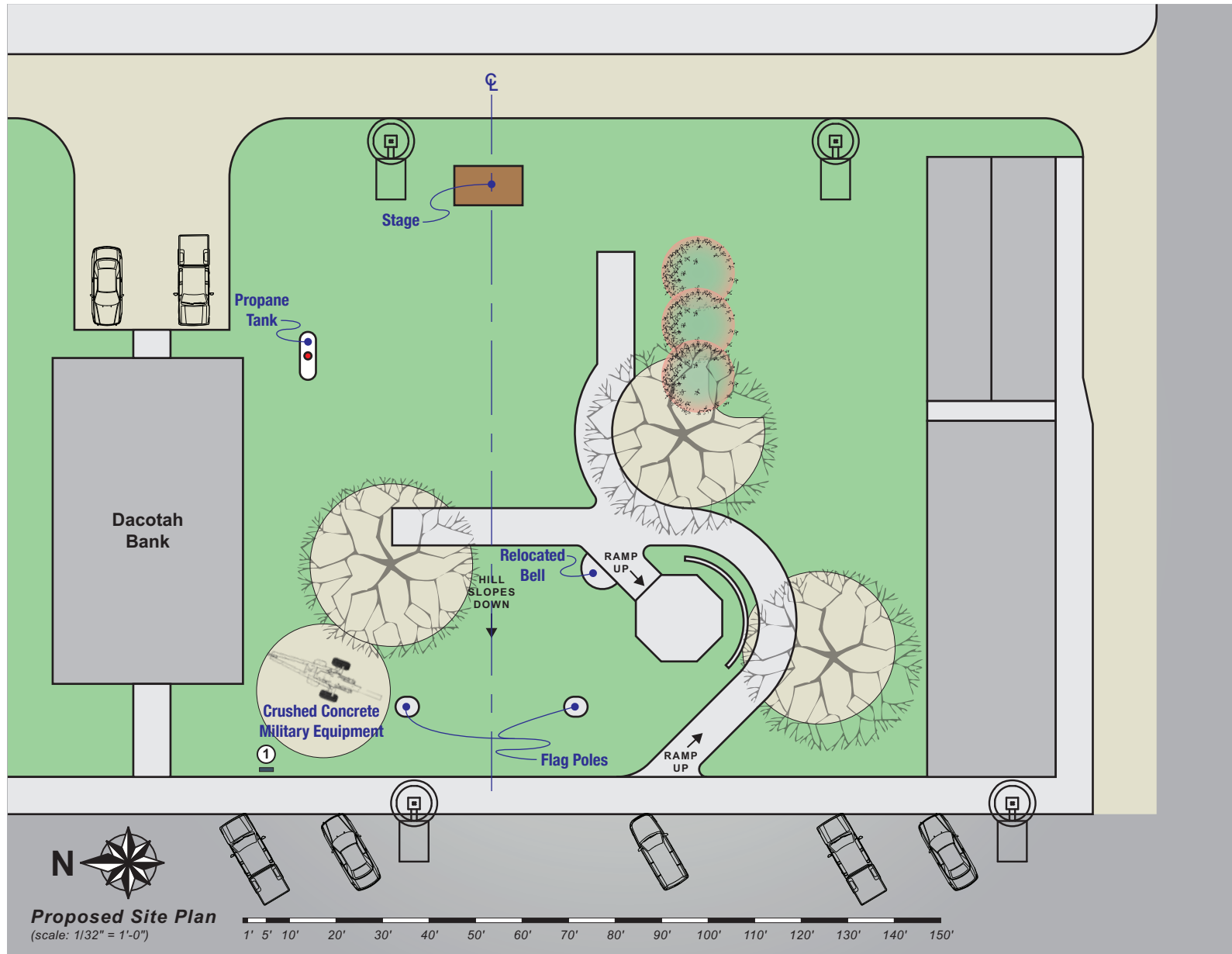
- Install Descriptive Monument Sign 1



- Monument graphic sets goals for the park and two years of phases
- Fall of 2023, area cleared and crushed concrete set in place for donated piece of military equipment



Veterans Memorial Park – Phase 2/Veterans Day 11/11/24



Veterans Day 2024

- Upon completion of Vinegar Days 2024
 - Remove Gazebo
 - Relocated Donor Bricks
 - Remove Old Trees
 - Relocate Young Trees
 - Dirt Work / Grade Lot
 - Concrete Work
 - Sidewalks
 - New Gazebo Base
 - Base for Bell
 - Planting of the Three Statement / Foundation Trees
- Graphic content will be further developed for final monuments throughout 2024
 - Identify and confirm service member names
 - Historic highlights and connected service members
 - Family displays
- Continuation of fundraising efforts



Veterans Memorial Park – Phase 3/Memorial Day 05/26/25



Memorial Day 2025

- Monuments and Graphic Panels will be fabricated during the winter of 2024
 - Concrete foundations poured Spring 2025
 - Monuments installed Spring 2025
- Final planting of larger shrubs, bushes and flowers Spring 2025
- New Gazebo will be fabricated and installed Spring 2025

